



# NRW Liga Damen 17 + 18.09.2011

Oil Per Board: 50 uL      Oil Pattern Distance: 40 Feet      Volume Oil Total: 26.75 mL      Total Boards Crossed: 535 Boards

Forward Oil Total: 15.6 mL      Reverse Oil Total: 11.15 mL  
 Forward Boards Crossed: 312 Boards      Reverse Boards Crossed: 223 Boards

Reverse Drop Brush 32'. Download PDF for full description.

	Start	Stop	Loads	Speed	Crossed	Start	End	Feet	T.Oil
1	2L	2R	3	14	111	0.0	3.9	3.9	5550
2	9L	9R	1	18	23	3.9	6.4	2.5	1150
3	10L	10R	3	18	63	6.4	14.0	7.6	3150
4	11L	11R	3	18	57	14.0	21.6	7.6	2850
5	13L	13R	3	18	45	21.6	29.2	7.6	2250
6	14L	14R	1	22	13	29.2	32.3	3.1	650
7	2L	2R	0	22	0	32.3	34.0	1.7	0
8	2L	2R	0	26	0	34.0	40.0	6.0	0

Forward Reverse More Info

	Start	Stop	Loads	Speed	Crossed	Start	End	Feet	T.Oil
1	2L	2R	0	30	0	40.0	30.0	-10.0	0
2	14L	14R	1	22	13	30.0	26.9	-3.1	650
3	13L	13R	3	18	45	26.9	19.3	-7.6	2250
4	11L	11R	3	18	57	19.3	11.7	-7.6	2850
5	10L	10R	2	14	42	11.7	7.8	-3.9	2100
6	4L	4R	2	10	66	7.8	5.0	-2.8	3300
7	2L	2R	0	10	0	5.0	0.0	-5.0	0

Forward Reverse More Info

Conditioner:  
Type In or Select One

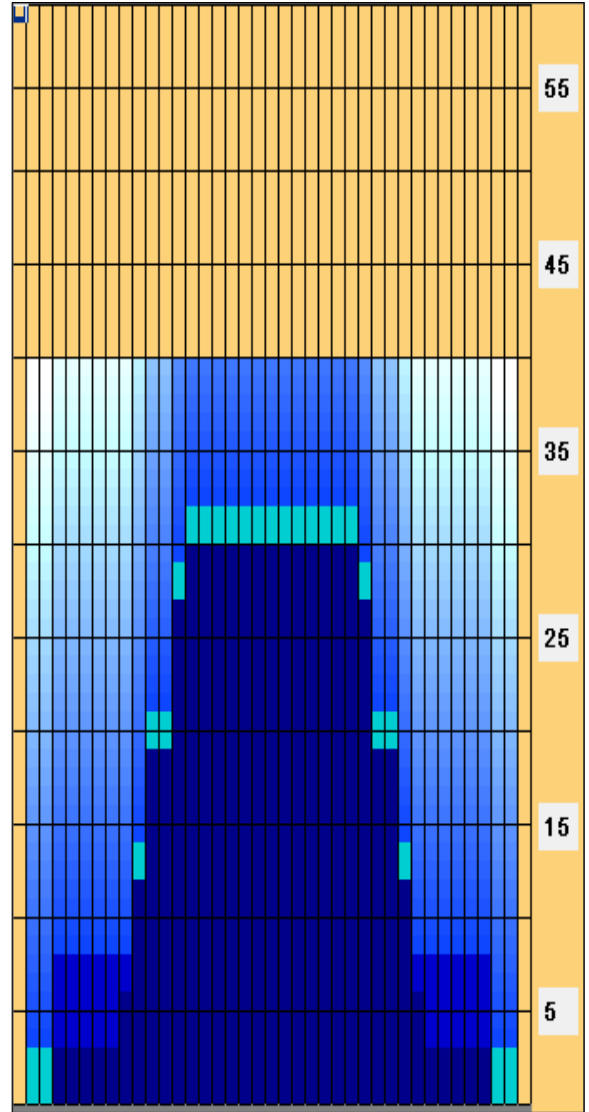
TransferType:  
Type In or Select One

Forward

Reverse

Combined

Buff



Arrow Zone Ratios

Item	2-5L:16L-20	6-10L:16-20	11-15L:16L-20	16L-20:20-16R	16L-20:20-16R	20-16R:15-11R	20-16R:10-6R	20-16R:5-2R
ul Arrow	200	320	1070	1250	1250	1070	320	200
Zone Ratio	6.25	3.91	1.17	1	1	1.17	3.91	6.25

Track Zone Ratios

Item	3L-7L:18L-18R	8L-12L:18L-18R	13L-17L:18L-18R	18L-18R:17R-13R	18L-18R:12R-8R	18L-18R:7R-3R
Description	Outside Track:Middle	Middle Track:Middle	Inside Track:Middle	Middle: Inside Track	Middle:Middle Track	Middle:Outside Track
Track Zone Ratio	5.43	2.23	1.02	1.02	2.23	5.43

